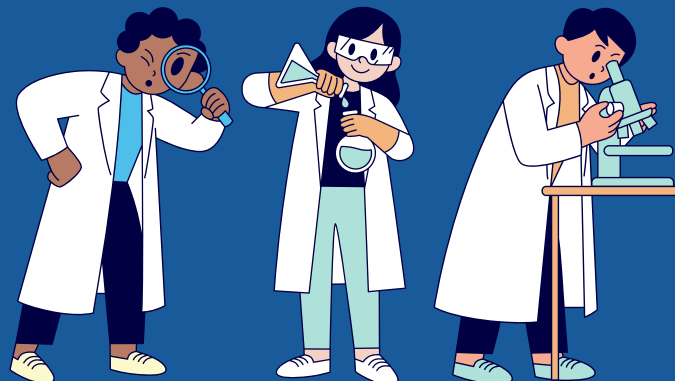




THE ERASMUS+ PROJECT My Diversity, Our Strength



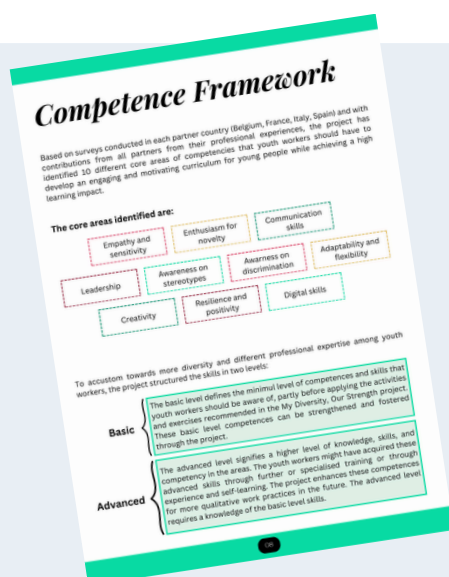
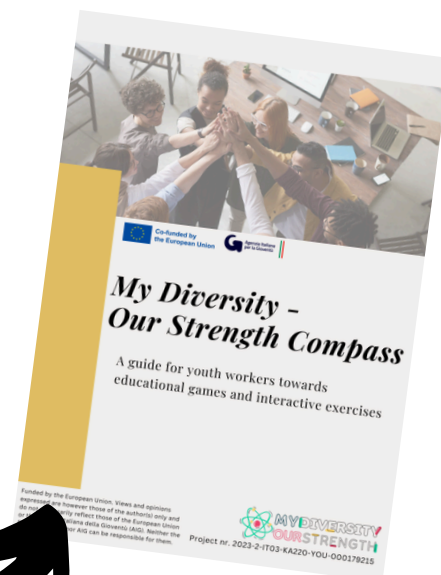
Co-funded by
the European Union



Explore the My Diversity, Our Strength Compass!

We are delighted to present you with our project Compass, a comprehensive guide for youth workers and youth work professionals, supporting them in designing interactive and engaging non-formal education activities.

The Compass was developed with contributions from all partners based on their expertise, educational approaches and knowledge. Thus, the Compass combines a variety of group activities, gamified learning, digital exercises and collaboration, among many other methods of learning and teaching.



COMPETENCE FRAMEWORK

To ensure the usefulness and effectiveness of the Compass, partners developed a Competence Framework of basic and advanced skills which youth workers need to have and enhance to make youth work as successful and impactful as it can be.

The Competence Framework includes 10 different competence sectors and can be found in the Compass, as well as separately as a reference point.

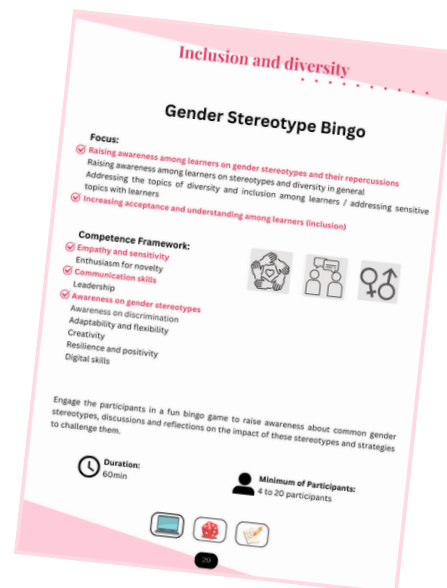


With an easy to navigate structure, the Compass and Competence Framework provide more insight into

- **Inclusivity and diversity**
- **Leadership and group management**
- **Creativity and innovation for design**

and what is needed to develop innovative activities for all three areas.

You can find the Compass and all accompanying materials on our website mydiversity-ourstrength.eu



What we will do next: co-creation of the Escape Box

Together, the partners of the project have already started the development of the Escape Box which is included in the project: Starting with the **mysterious story** of a certain protagonist who needs to re-discover her past, the Escape Box will delve into **STEM-related puzzles and codes** in a fun and easy-to-play way. The player is invited on an educational journey and to dive into the story told, while supporting the protagonist in her journey of discovery, finding her memories and exploring all STEM subjects!

Want to know when you can explore the Escape Box? Keep in touch!

For any information you can reach us at the following addresses:

projects@escape4change.com

elisabetta.bottero@escape4change.com

